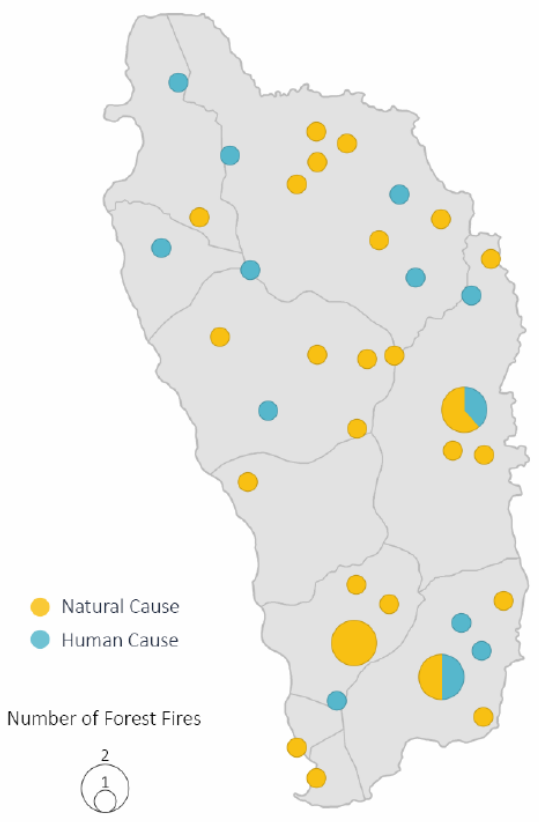


Dominica - Comparison between the effects of human and naturally caused forest fires

Data From 9-10-1969 to 9-10-2019

Forest Fire Locations

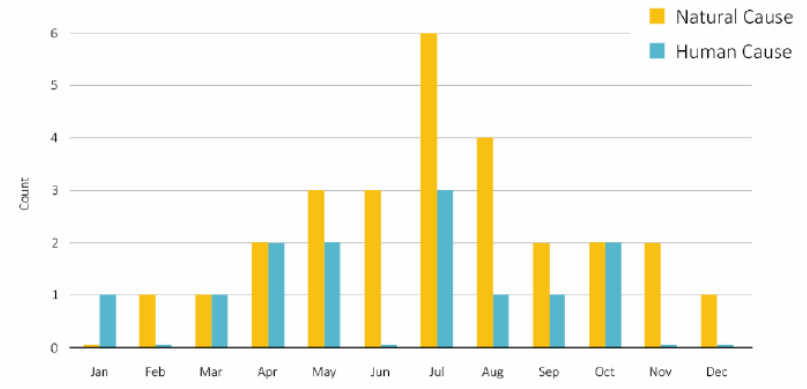


Number of Forest Fires

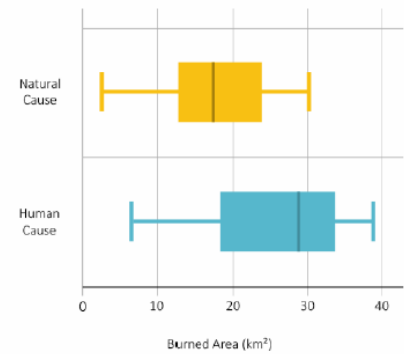
40

Natural Cause	Human Cause
27	13

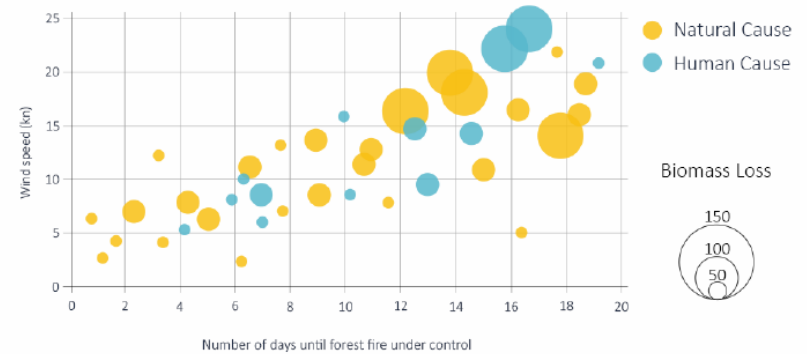
Monthly Forest Fire Count



Distribution of Burned Area



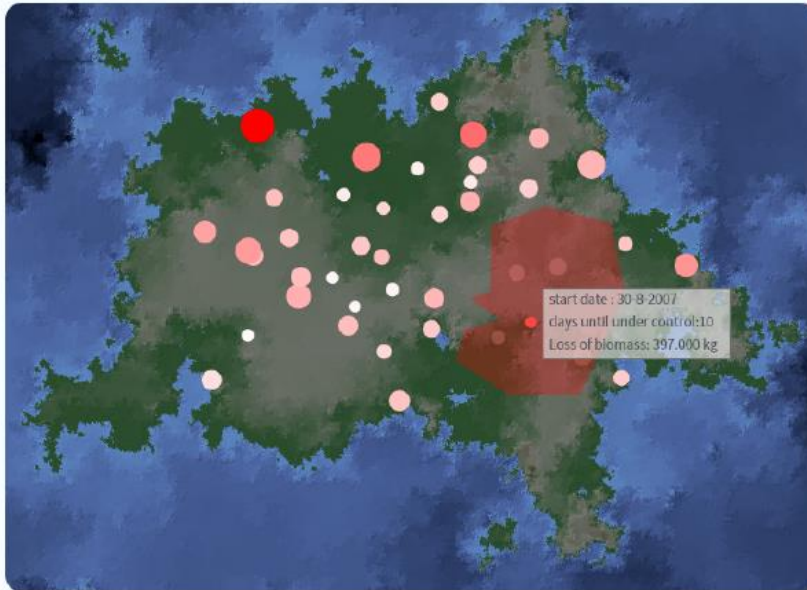
Wind Speed and Forest Fire Suppression Correlation





50 Years of Fires

Location of Fires



Legend

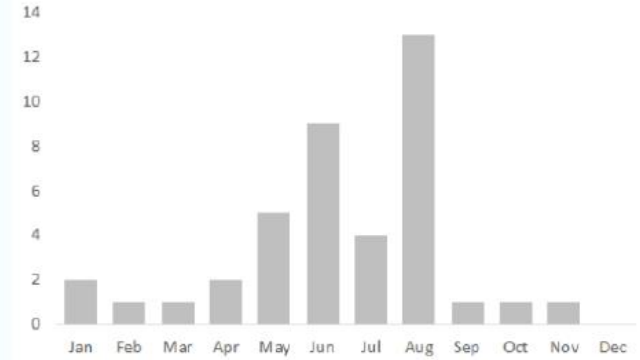
Days until fire under control

- 1 day
- 4 day
- 9 days
- 14 days
- 16 days

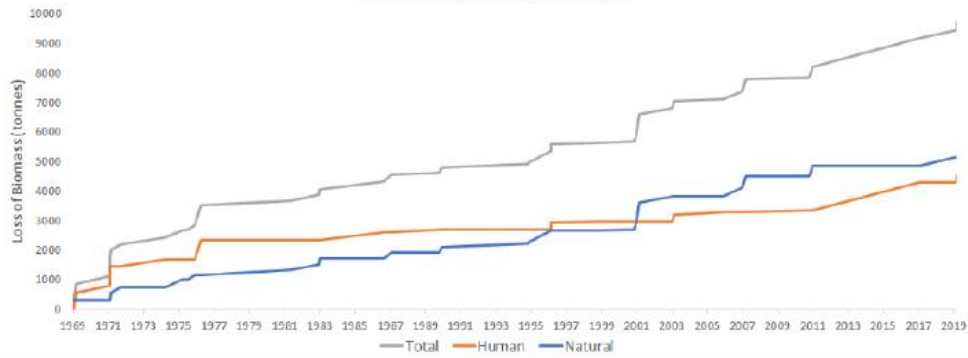
Biomass lost (in 1000 kg)



Number of Fires per Month

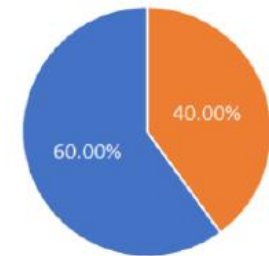


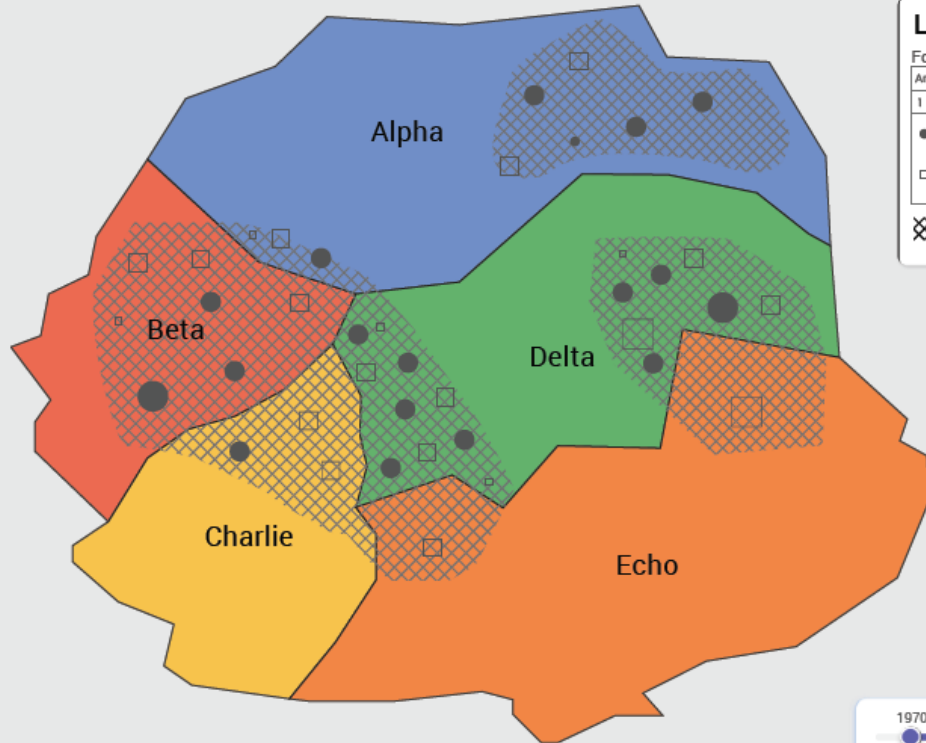
Cumulative Loss of Biomass



Cause of Forest Fire

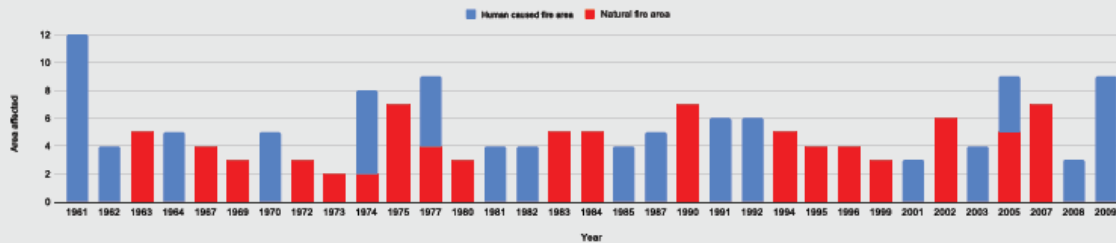
Human Natural





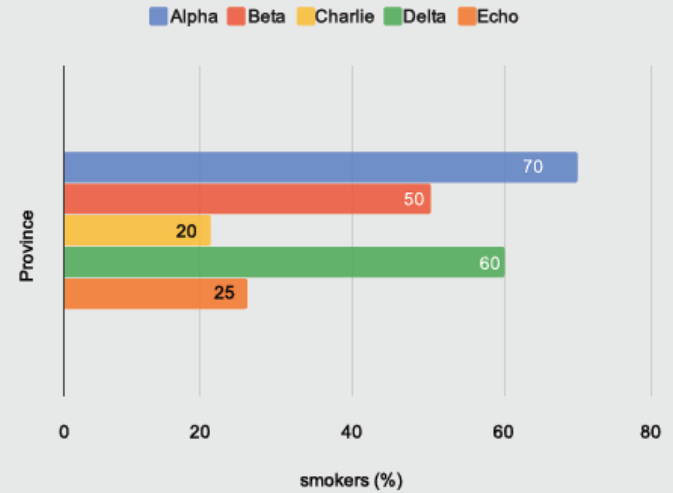
Natural and human caused fires for each province

This map shows the location and size of natural and human caused forest fires.



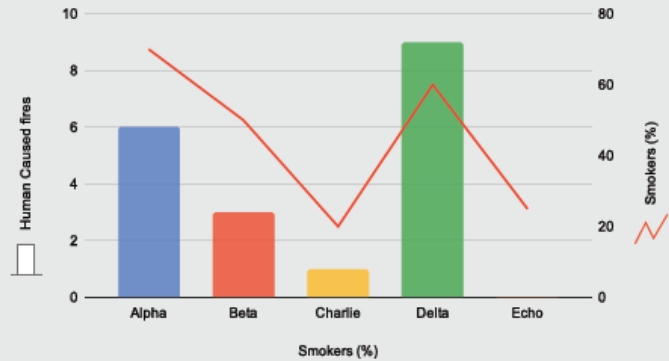
Combined area affected by natural fires and human caused fires over time

A timeline of the total affected area for each year by natural and human caused fires



Smokers (%) for each province

The proportion of the population in each province that smokes

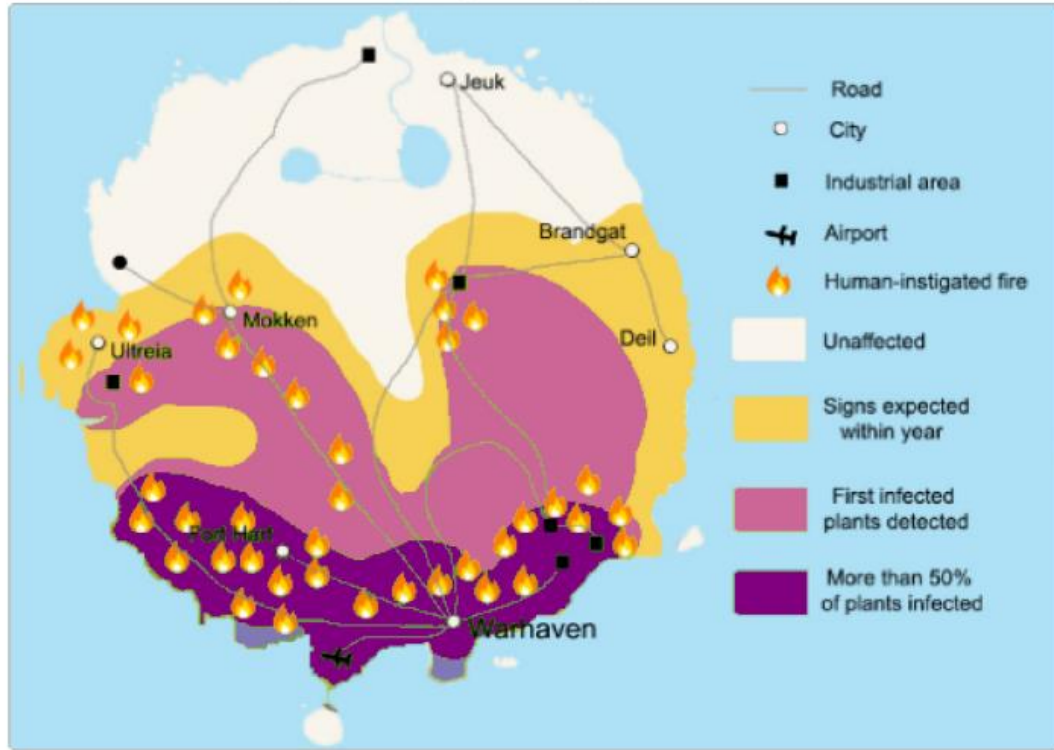


Smokers (%) and human caused forest fires per province

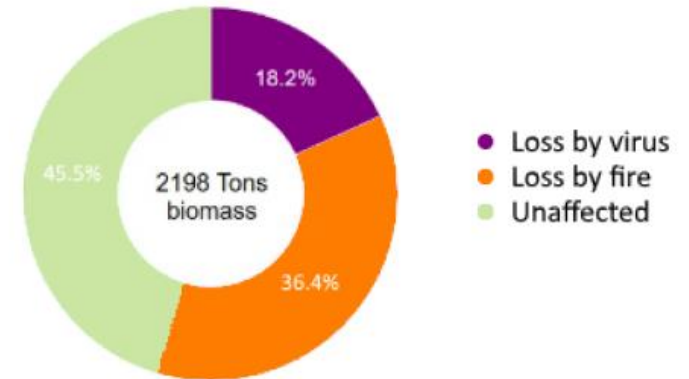
The proportion of smokers in each province and the amount of human caused fires

The effects of and efforts against the spread of Coquus Exygeni on Mitsjah, in 2065-2070

Spread of Coquus Oxygeni infection



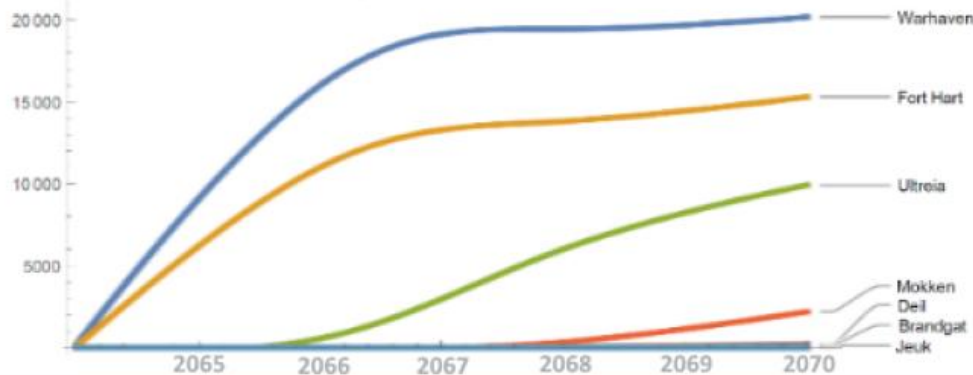
Total effect on biomass



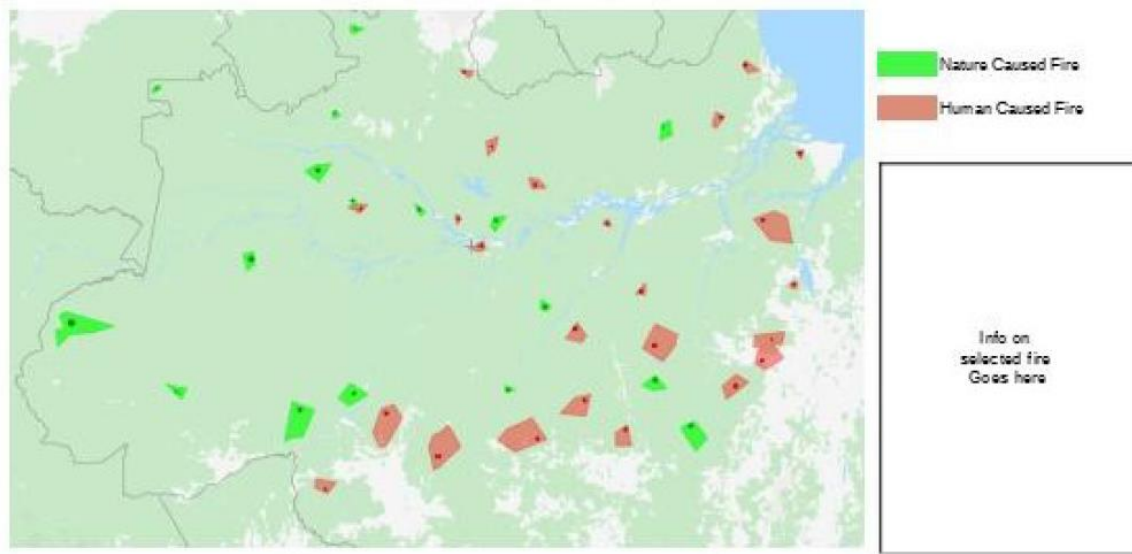
Spread of human-instigated fires and forest regions



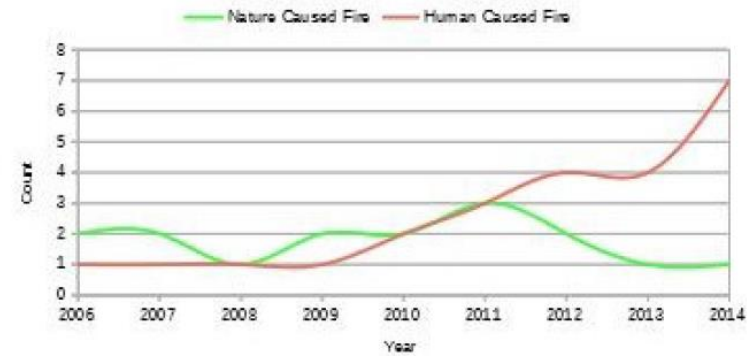
Number of hyperoxia cases over time



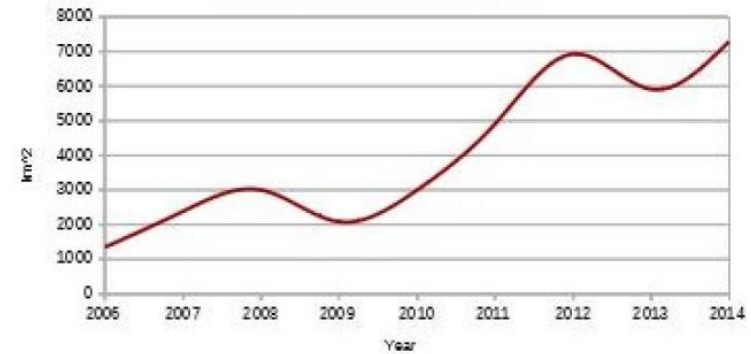
Forest fires in the Amazon region between 2006-2014



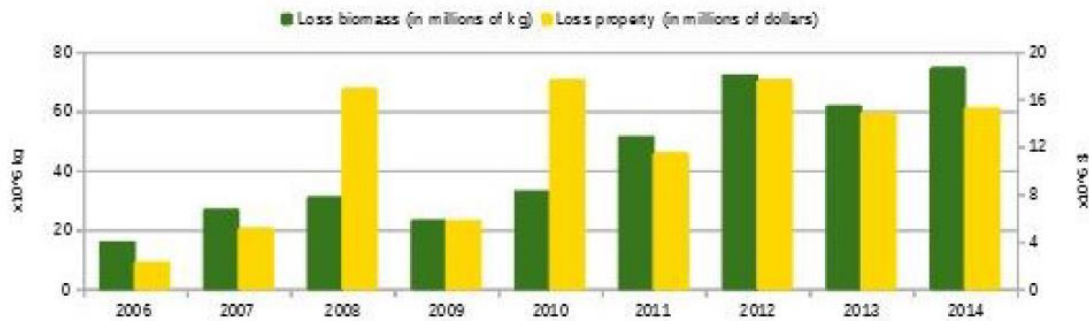
Fires caused by Nature vs Human



Average area burnt over the years



Average losses due to fires



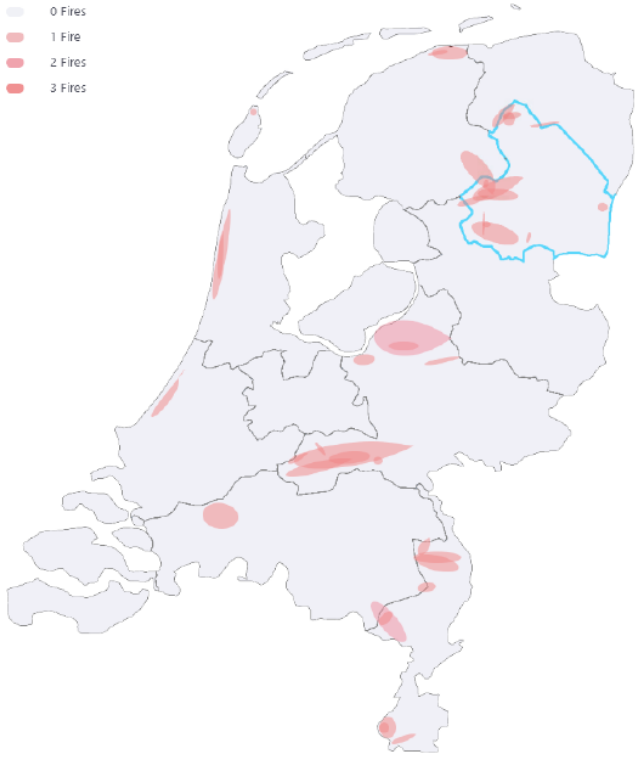
THE AMAZON IS ON FIRE

Forest Fires in the Netherlands between 2008 and 2012

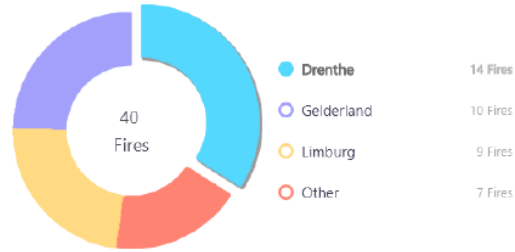
The Netherlands Forest Fires Heat Map

Drenthe

- 0 Fires
- 1 Fire
- 2 Fires
- 3 Fires



Fires per Province



Average Consequences of Forest Fires

Drenthe



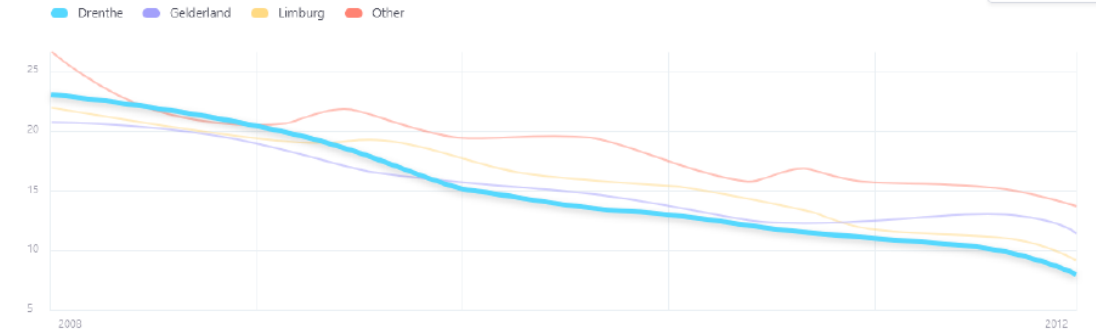
-55.5%
Property Damage

-43%
Mass Loss

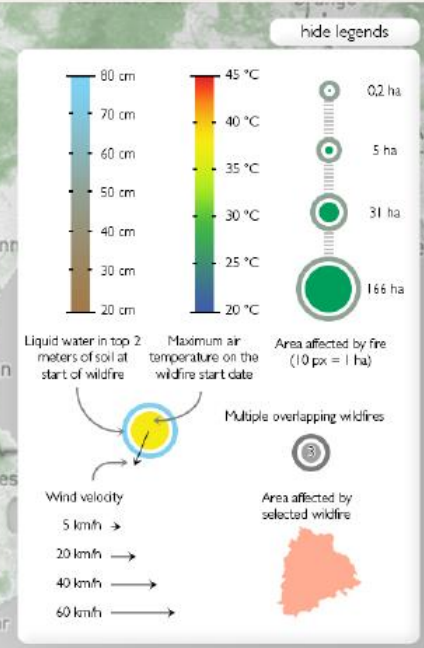
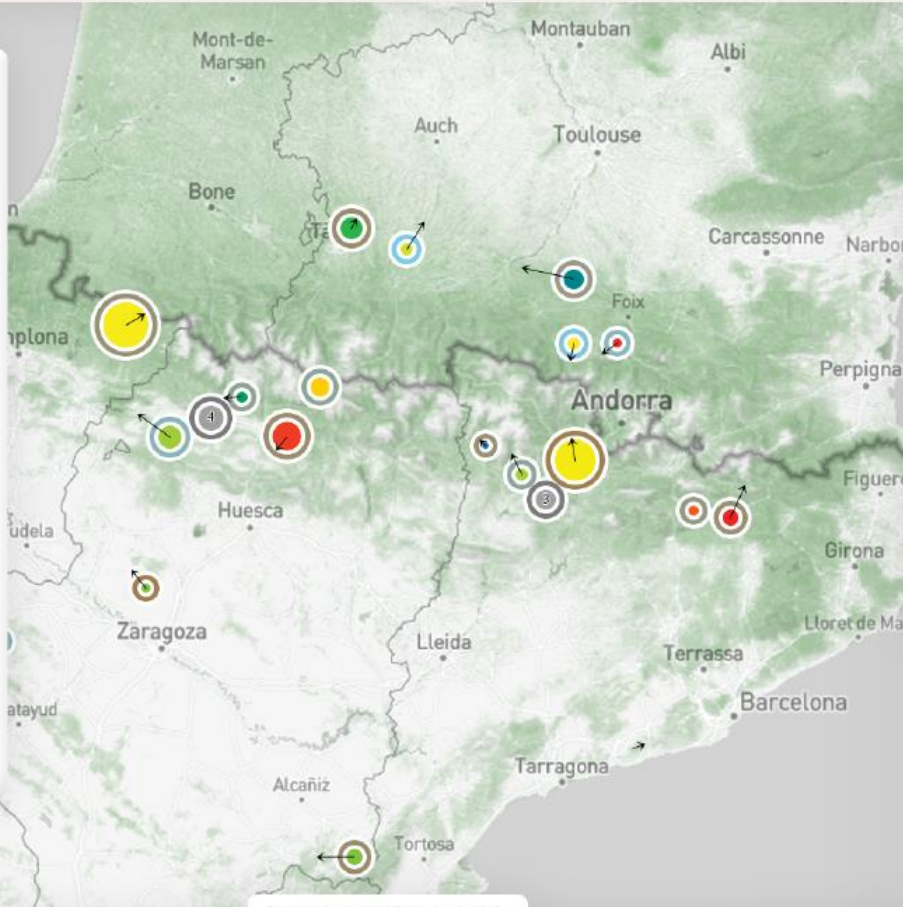
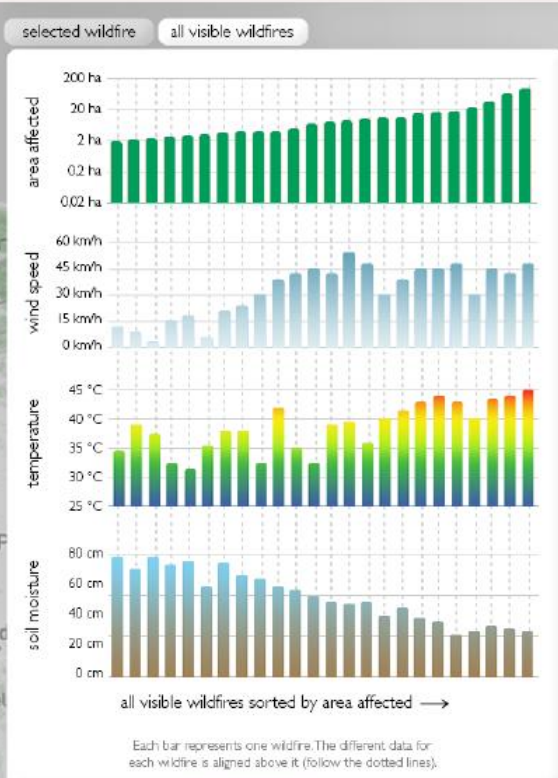
-40%
Area Affected

Average Number of Days until a Forest Fire is Under Control

Drenthe



INFLUENCE OF WEATHER CONDITIONS ON WILDFIRE SPREAD



26/40 wildfires visible





FOREST FIRES

Search to directly filter on location or date...

Welcome back, Marc!



Active filters

Brazil

01-01-1985 to 01-01-2000

€ 530K to 10M

Filters

Cause

- Human
- Natural

Loss of property (€)

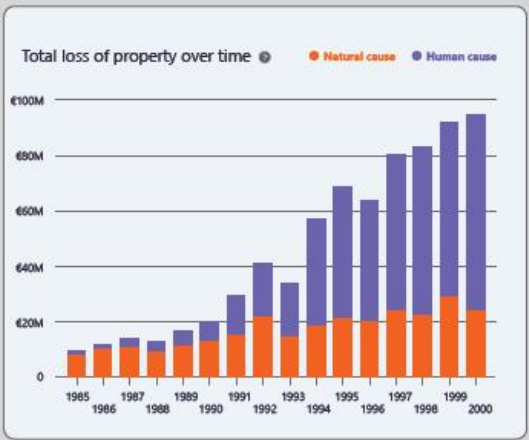
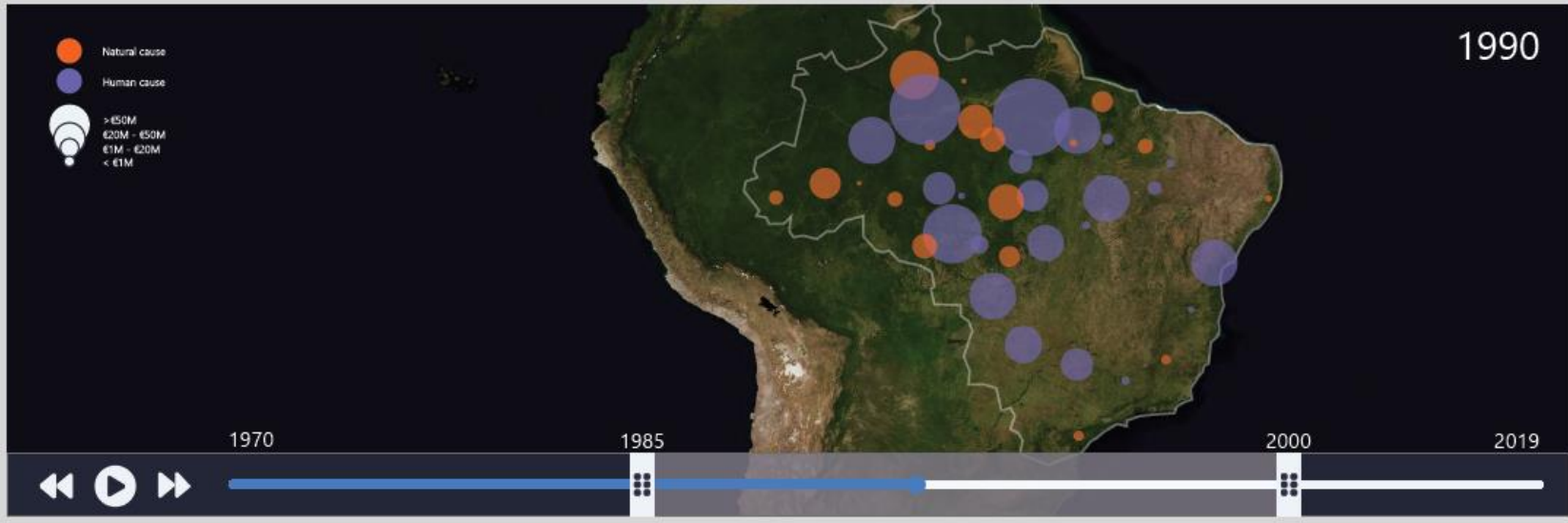


Location

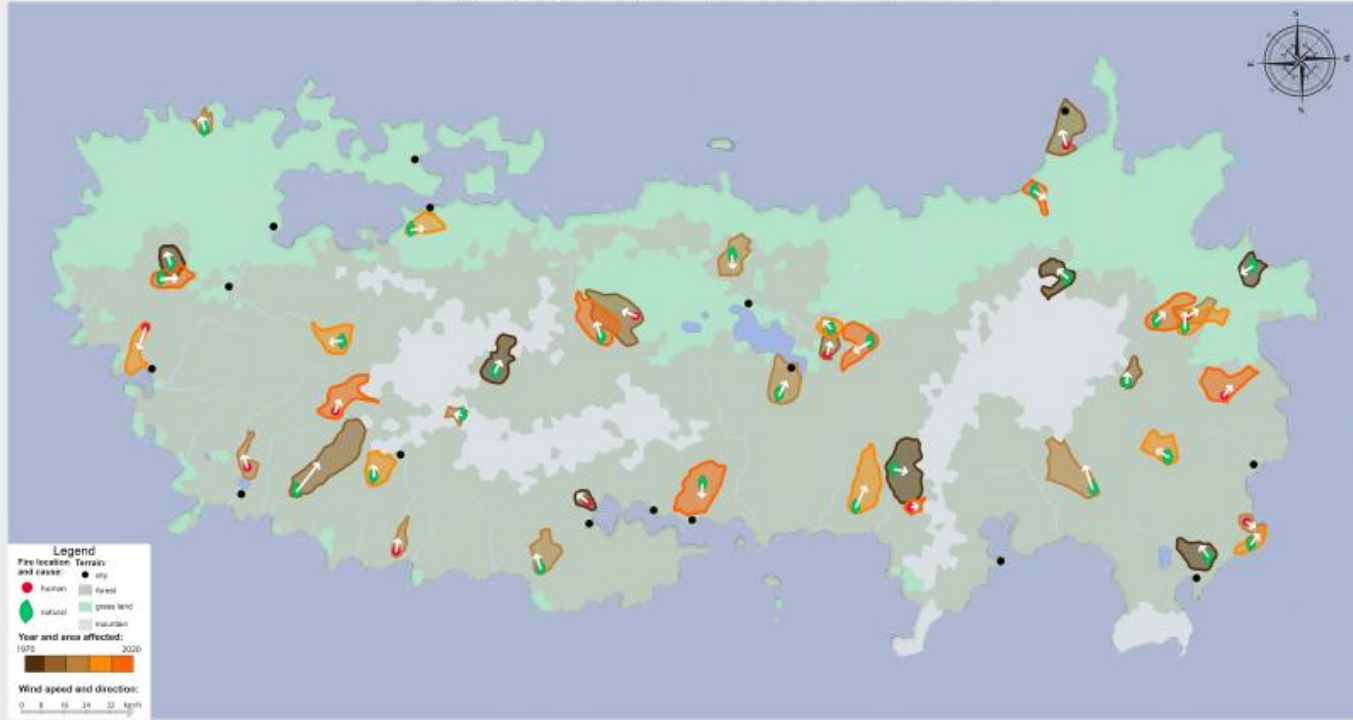
Brazil

Date

From: 01-01-1985
To: 01-01-2000



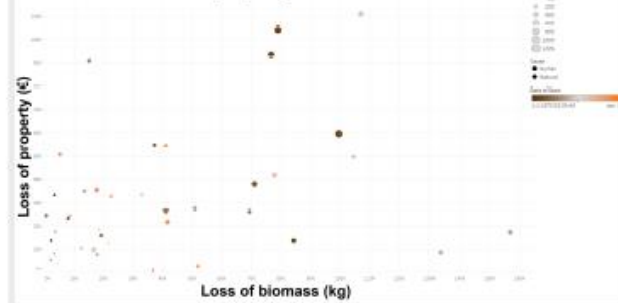
Forest fires in Erif Tserof



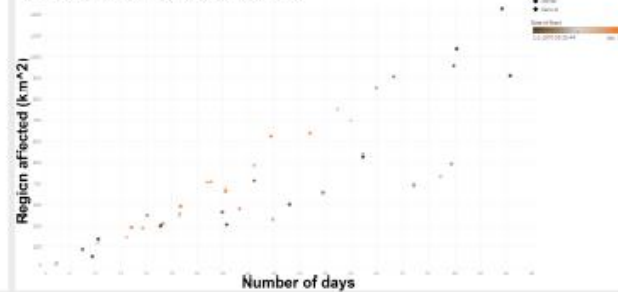
Severity of fires over time



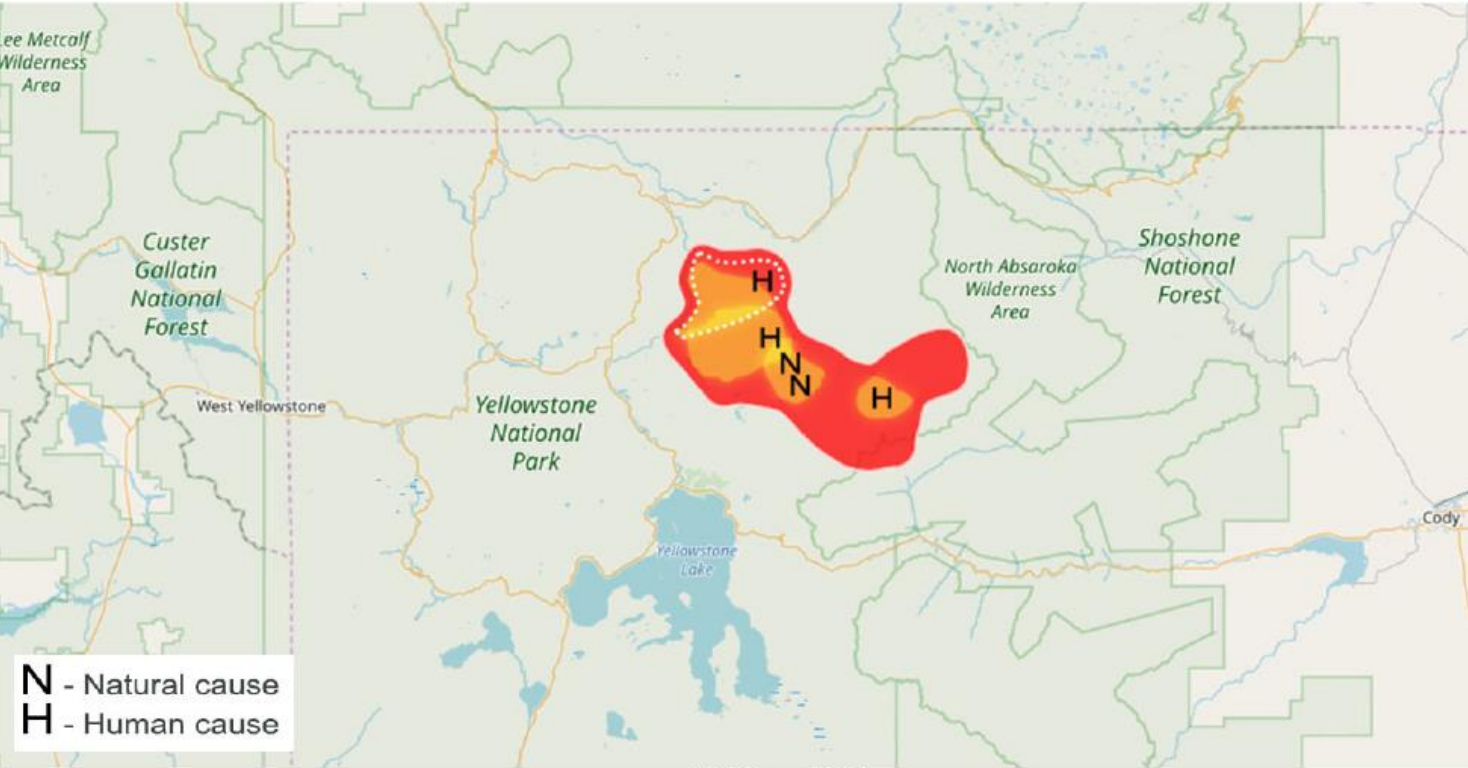
Loss of biomass and property



Time length and region affected

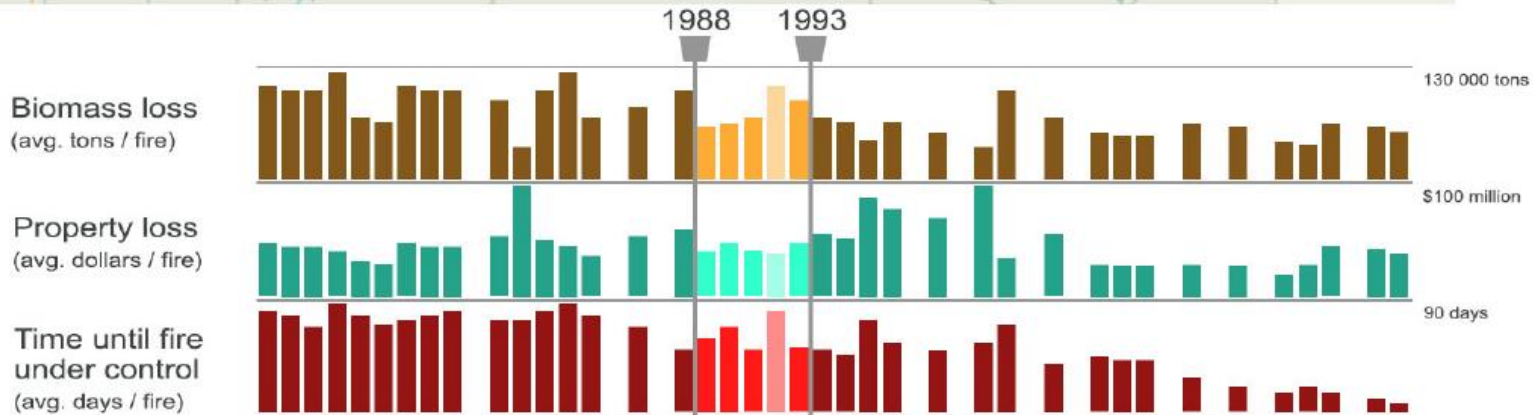


Effectiveness of Wildfire Fighting in Yellowstone National Park



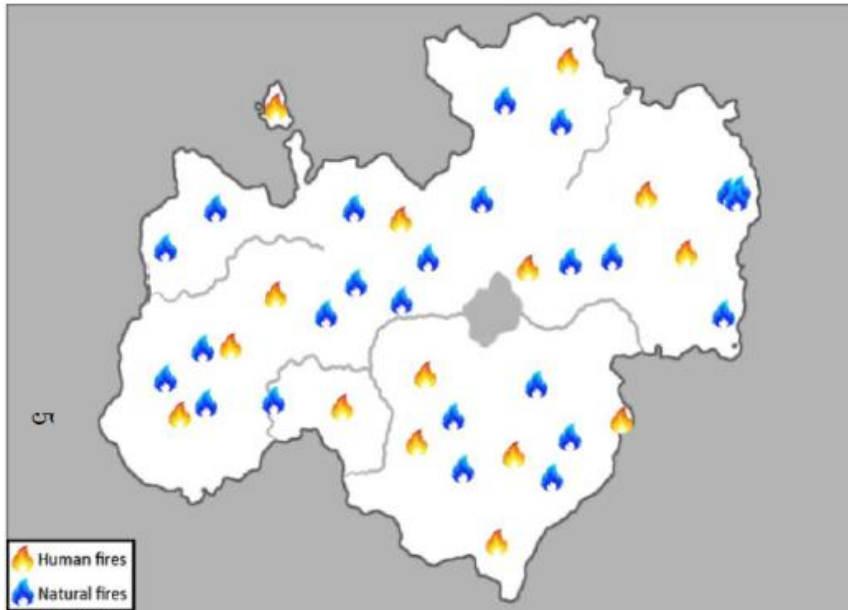
- Natural cause
- Human cause
- Show heat map
- Show starting points

N - Natural cause
H - Human cause



Fires from 1960 to 2010

Loss of biomass and property



Number of fires: **40**



Human fires Natural fires



Total loss of biomass
97556 km²



Total loss of property
€7,257,700.-



Days until fires under control

Total: 2543 Average per fire: 64

